

GPS Watch Tracker

12 month warranty / no contracts



GPS Watch Tracker Overview

Our GPS device is designed to be a personal alarm for all ages, as well as a remote personal tracking device.

A complete tracking experience that comes with all the features and functions that is simple and easy to understand.

Quickly locate, monitor, and track your loved one by logging into your APP for Android or Apple iOS devices. Multiple family members can also track and receive alerts.

General Features

- 4G LTE GPS
- Waterproof IP67
- Location tracking/positioning
- Two way communication
- Geo-fence
- SOS emergency call
- Heart rate monitoring and blood pressure
- Temperature reading
- Voice chat
- Voice messaging
- SOS alerts
- Step counter
- Alarm clock
- Historical route track
- Medicine reminder
- Find device
- Talking clock



4G LTE GPS tracker

The faster & more accurate satellite positioning based on Beidou+GPS system. Safety fence protection, intelligent navigation to find people. No matter how far the distance, take care of family's health and safety easily.



Fast dial - Big button & embossed design

Obvious great feeling and embossed buttons for weak eyesight people.

Fast dialing with 1 or 2 button to meet the daily communication needs with different family members.



SOS Call One-click help

In an emergency, press and hold the SOS button of the bracelet for 5 seconds.

The bracelet immediately sends an alarm signal and dials 3 calls for help to ensure the safety of family members.



Auto pick up calls - High-definition voice call

Not only ringtones and vibration remind but also can be set with automatically answer, then never missed the love for the family, always connected.

Even if you have poor hearing, you don't have to worry about missing a call.



IP67 waterproof

In raining or swimming, it works well in either scene perfectly, offering all time care to your families.



Ring to find your device

In darkness, different surroundings, the bracelet gives out ringtone for a fast locating, offering all time care to your families.



Voice chat freely

Accompanying is the most affectionate confession, through App voice chat, you can chat anytime, anywhere.

The elderly can chat with their kids freely!



Wear detection, alarm triggers once gets off

Built-in infrared and distance dual sensors, once removed, immediately notify the guardian in various ways.

Infrared and distance dual sensors to reduce false alarms due to internal jitter of the sensor.



Magnet charging makes it easier and safer

With magnet charging way, no more worries about device powers off with battery runs out but hard to charge with poor eyesight, offering better cares to your families.



Low battery alarm

When the power is less than 10%, the device will send a message to the phone for notifying it is in a low battery condition, please charge it in time.



Historical route

The server can save historical route for three months, which can be viewed through APP, webpage, WeChat, etc., allowing you to recall the road you have taken and the scenery you have seen anytime, anywhere.



Geo-fence

Set a safe range, can be viewed realtime on the APP, when the tracker is out of range, the alarm information will be sent to the mobile phone automatically.



Fall detection

Intelligent identification and active fall alarm, let the family know the situation of the elderly the first time.

Intelligent calculation identifies the state and speed of a fall, and sends out a prealarm first to reduce false alarms and improve the safety factor of the elderly.

Provides six fall trigger levels, corresponding to users with different physical conditions.

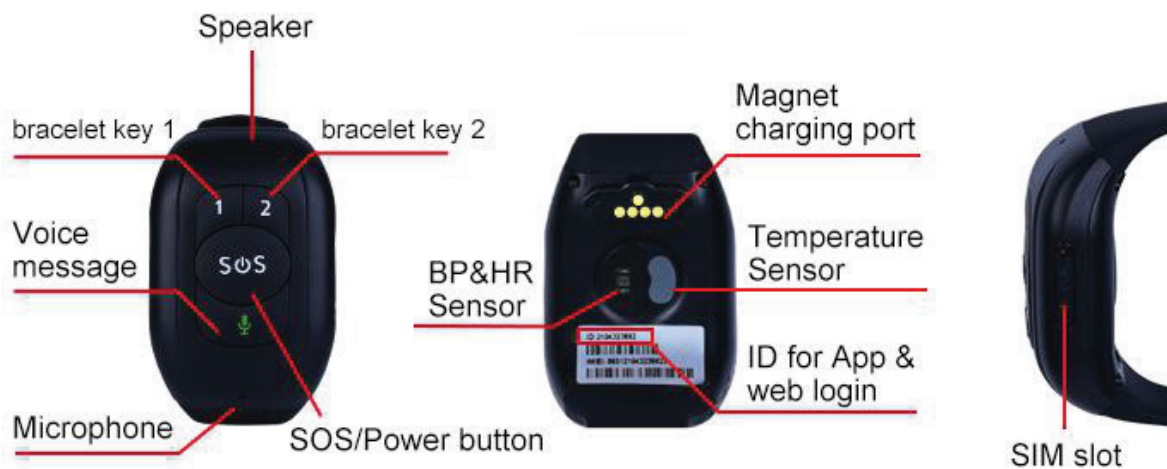
Health monitor - more comprehensive protection

Equipped with a new generation of PPG health monitoring sensor, directly measuring heart rate, blood pressure and body temperature

Photoplethysmography (PPG) technology uses photoelectric sensors to detect the difference in the intensity of reflected light absorbed by human blood and tissues, and trace the changes in the vascular volume movement cycle, thereby calculating heart rate and blood pressure data.

Pill reminder

Step counting



Product features parameter diagram

4G FDD:	Band 1/2/3/5/7/8/20	Working temperature:	-20°C ~ +70°C
4G TDD:	Band 38/39/40/41	Working humidity:	5% ~ 95% RH
3G WCDMA:	Band 1/2/5/8	Host size:	65 x 42 x 20mm
2G GSM:	Band 2/3/5/8	Device net weight:	73g
GPS locating time:	30 sec with cold boot (open sky) 29 sec with warm boot (open sky) 5 sec with hot boot (open sky)	Battery capacity:	1000mA
GPS accuracy:	5-15m (Open sky)		
WIFI accuracy:	15-100m (Under WIFI signal coverage)		